

RCD Type LOAD CELL
INSTRUCTION MANUAL

Cable connection methods.

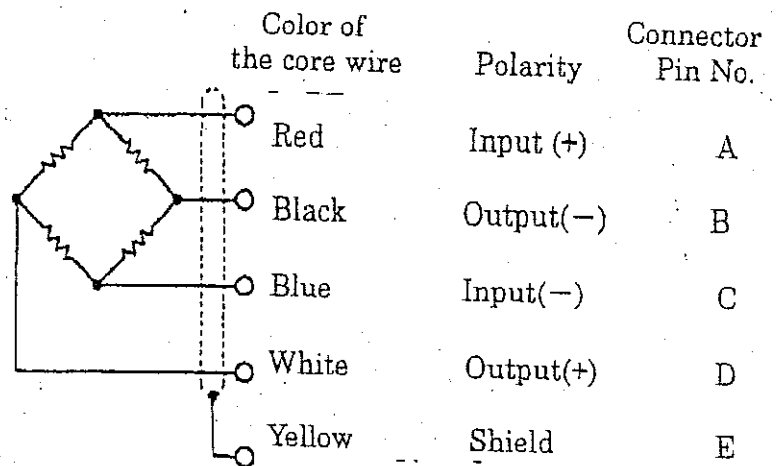
Connection methods are shown in the < Fig 1 >.

If you have misconnecting, there might be troubles with zero balance and errors on output voltage under load condition.

Maximum Admissible Excitation Voltage

<Table 1>

Maximum Admissible Excitation Voltage (AC / DC)	20 V
Nominal Range of Excitation Voltage (AC / DC)	12 V

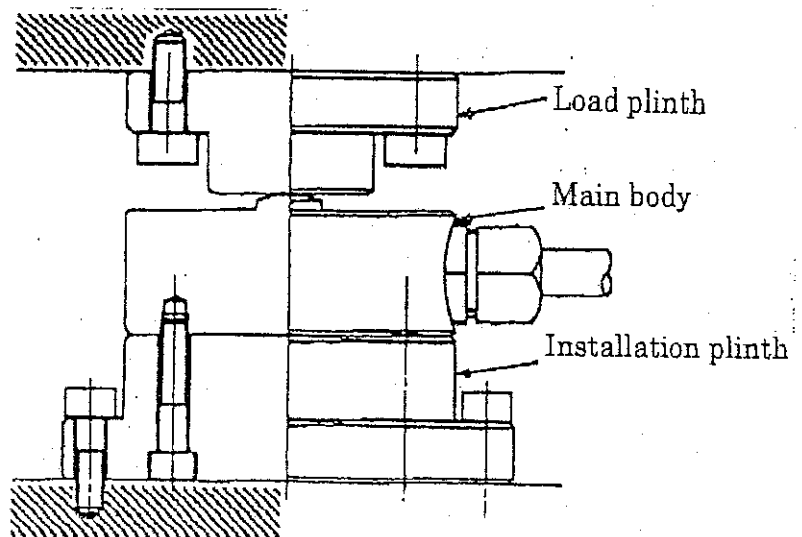


Installation and Handling Cautions.

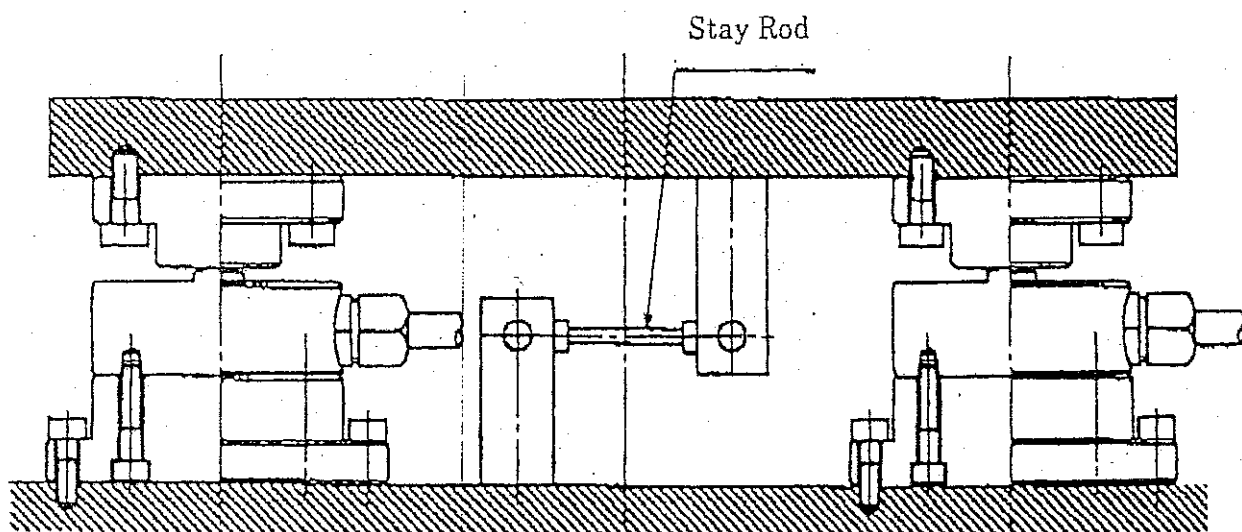
Set up : There are four screws (tap hole) on the Surface of bottom. When you can not fix the bolts on the bottom surface, use the installation plinth shown in < fig 2 >.

For the great performance, please pay attention to the following three facts during installation.

- ① Installation side must be 90° to the loading axis.
- ② Imposing power should go through the center of the unit.
- ③ Use the protection unit (Stay Rod) to avoid the loading from the side. < Fig 3 >



< Fig 2 > Using the installation plinth



〈Fig 3〉 Using the Stay Rod

• Use Environment and Caution

1. This unit is not waterproof. Please avoid from water and moisture.
2. Please do not stretch or bend the cable. It might be broken.
If the cable is not stable, please fix the cable.
3. Compensated temperature range is $-10\sim 60^{\circ}\text{C}$

• Maintenance

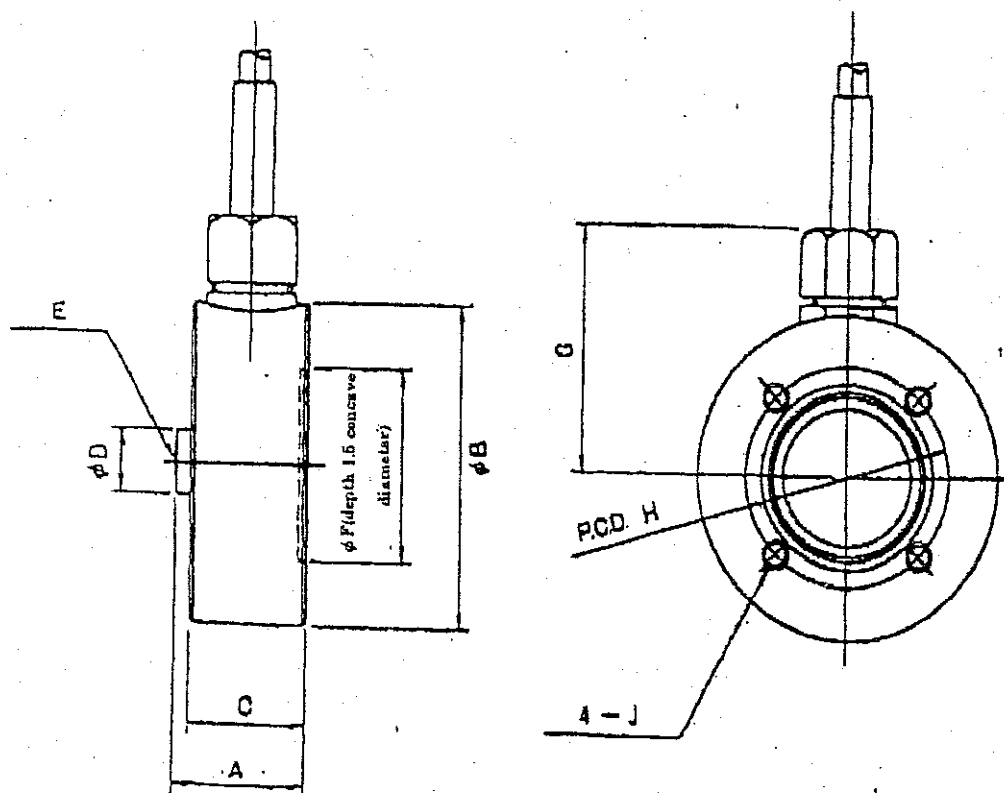
We suggest you to have a yearly maintenance and calibration (both with the extra charge) to maintain the quality of this product.

• Warranty

This product has a warranty of one year after purchase. When there is any troubles or machine break down, we will repair the machine without any additional charges. But for your misuse or disassembly, then we are not responsible for the guarantee.

Please understand the situation that sometimes the machine is beyond repair due to the unlimited overload and voltage.

• Dimensional Drawing



Unit : mm

• Dimensional Chart (Unit : mm)

Model	Rated Capacity	A	B	C	D	E	F	G	H	J
RCD- 500N	500N	25	60	22	12	SR 50	36	45	42	M5 Depth 6
RCD- 1kN	1kN	25	60	22	12	SR 50	36	45	42	M5 Depth 6
RCD- 2kN	2kN	25	60	22	12	SR 50	36	45	42	M5 Depth 6
RCD- 5kN	5kN	25	60	22	12	SR 50	36	45	42	M5 Depth 6
RCD- 10kN	10kN	25	60	22	12	SR 50	36	45	42	M5 Depth 6
RCD- 20kN	20kN	25	60	22	12	SR 50	36	45	42	M5 Depth 6
RCD- 50kN	50kN	40	100	35	24	SR 70	65	80	80	M8 Depth 15
RCD-100kN	100kN	40	100	35	24	SR 70	65	80	80	M8 Depth 15
RCD-200kN	200kN	45	120	40	33	SR100	73	90	90	M8 Depth 15

SPECIFICATIONS	
Type	RCD
Rated Capacity	500 N ~ 200 kN ()
Safe Overload Rating	150 %
Ultimate Overload Rating	200 %
Rated Output	2 mV/V \pm 1 % (2000 $\times 10^{-6}$ strain)
Input Resistance	425 Ω
Output Resistance	350 Ω
Nominal Range of Excitation Voltage	AC. DC. 12 V
Maximum Admissible Excitation Voltage	AC. DC. 20 V
Linearity	\pm 0.15 % R.O. (500N~20kN)
	\pm 0.10 % R.O. (50kN~200kN)
Hysteresis	\pm 0.15 % R.O.
Compensated Temperature Range	-10 ~ +60 $^{\circ}\text{C}$
Safe Temperature Range	-30 ~ +80 $^{\circ}\text{C}$
Temperature Effect on Zero Balance	\pm 0.01 % R.O. / $^{\circ}\text{C}$
Temperature Effect on Output	\pm 0.01 % / $^{\circ}\text{C}$
Cable, Dia. &Length	ϕ 6 mm Four Conductor Shielded Cable 5 m (500N~20kN)
	ϕ 8 mm Four Conductor Shielded Cable 5 m (50kN~200kN)
Remarks	